



GMT MONTHLY MEMBERSHIP PROGRESS REPORT

Results as of: 1/31/2020

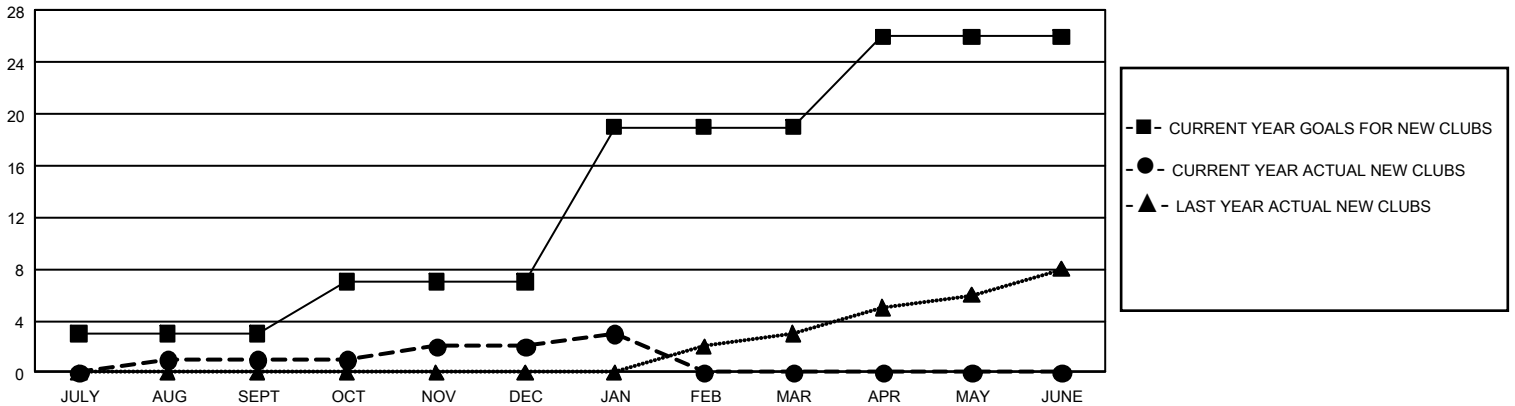
GMT Constitutional Area 1, Group F

GMT: OPEN

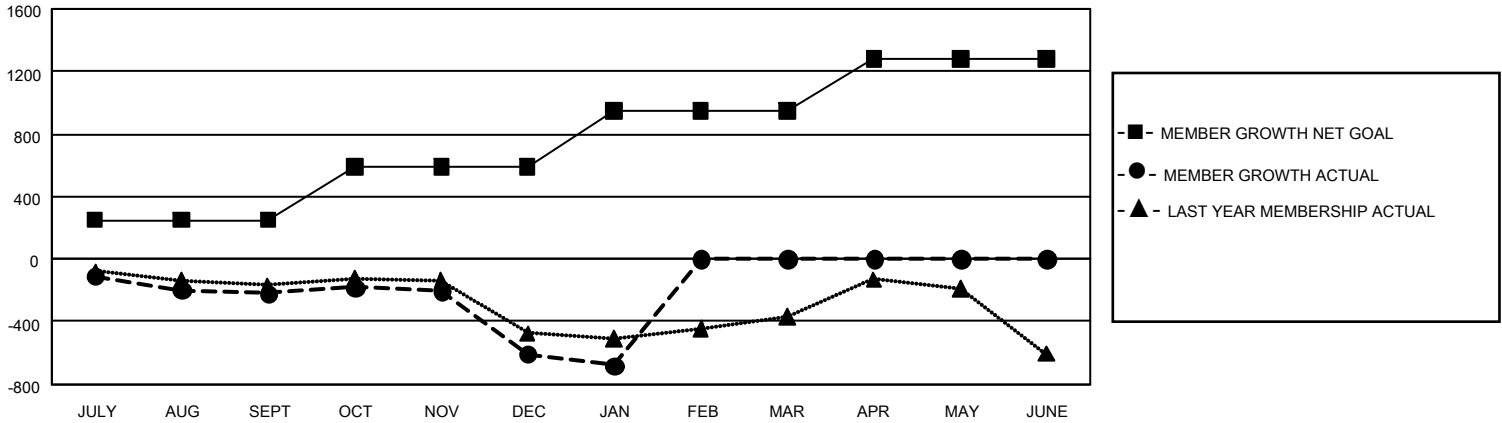
REPORT DOES NOT INCLUDE CLUBS IN UNDISTRICTED AREAS.

| Clubs | | | | Members | | | |
|-----------------------|---------------|-----------|---------------|-----------------------|------------------------|----------------------|--|
| RESULTS FOR 2019-2020 | | | | RESULTS FOR 2019-2020 | | | |
| QUARTER | NEW CLUB GOAL | NEW CLUBS | DROPPED CLUBS | QUARTER | MEMBER GROWTH NET GOAL | MEMBER GROWTH ACTUAL | DROPPED MEMBERS ACTUAL (including transfers) |
| JULY/AUG/SEPT | 9 | 1 | 5 | JULY/AUG/SEPT | 750 | 555 | 691 |
| OCT/NOV/DEC | 12 | 1 | 16 | OCT/NOV/DEC | 1,020 | 578 | 908 |
| JAN/FEB/MAR | 36 | 1 | 5 | JAN/FEB/MAR | 1,068 | 243 | 259 |
| APR/MAY/JUNE | 21 | 0 | 0 | APR/MAY/JUNE | 1,011 | 0 | 0 |

GOALS AND ACTUAL NEW CLUBS CUMULATIVE



GOALS AND ACTUAL MEMBERS CUMULATIVE



| | | |
|---|---|---|
| DROPPED CLUBS: 26 | 408 CLUBS OF 915 ADDED 1 OR MORE NEW MEMBERS | <u>GENDER DISTRIBUTION</u> MALE 15,641 (63.30%) FEMALE 9,069 (36.70%) |
| <u>DROPPED MEMBERS</u> DECEASED 223 CLUB CANCELLED 220 OTHER 1,413 <hr/> TOTAL 1,856 | CLICK HERE FOR CUMULATIVE MEMBERSHIP DATA | TOTAL FAMILY UNIT MEMBERS 4,418 FAMILY MEMBERS PAYING HALF DUES 2,292 |